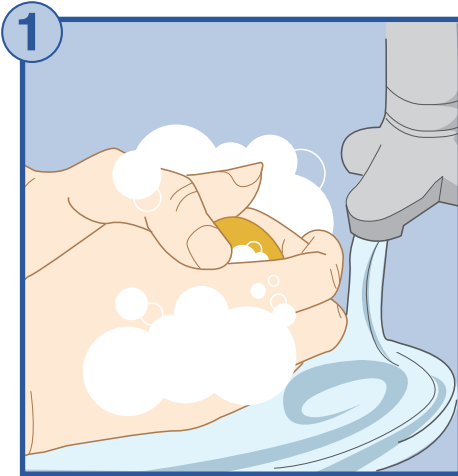
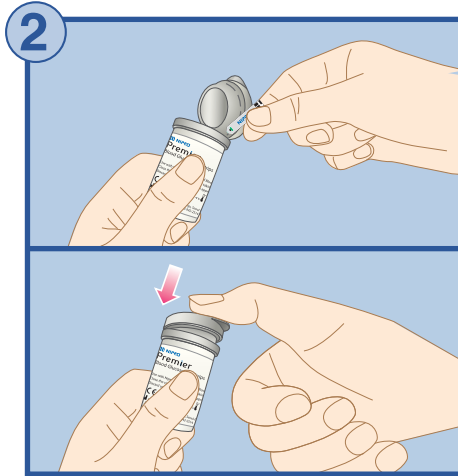


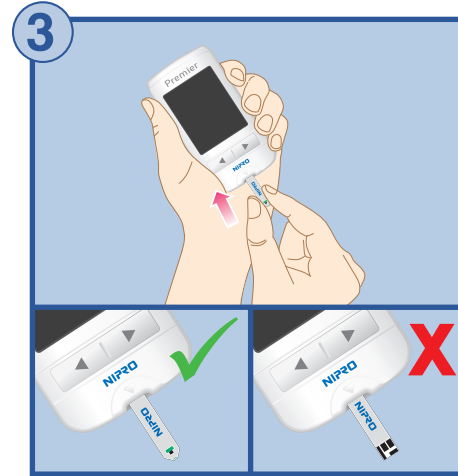
SIMPLE STEPS TO TEST YOUR BLOOD GLUCOSE USING PREMIER



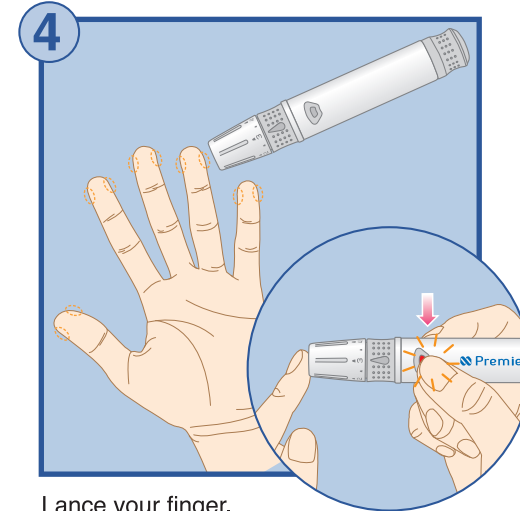
Wash and dry your hands thoroughly.



Remove test strip from vial and close vial immediately.

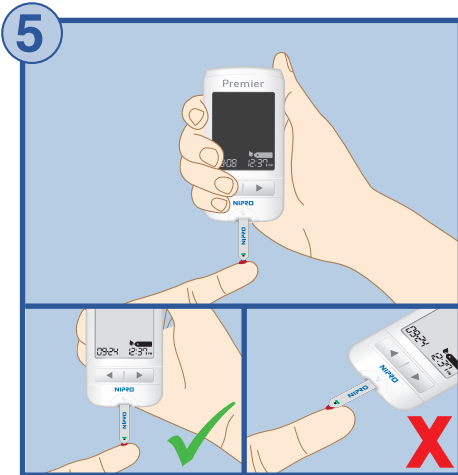


Insert test strip into test port with square contact ends (blocks) facing up, Meter will automatically turn on and prompt for blood.

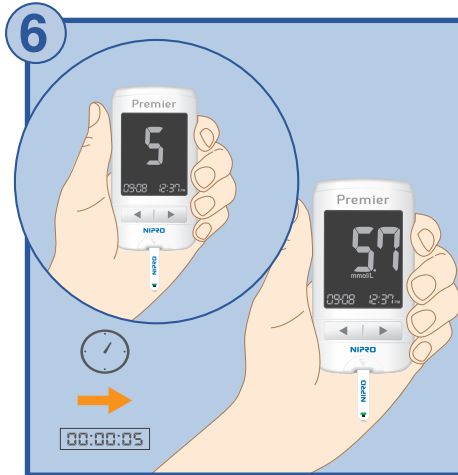


Lance your finger.

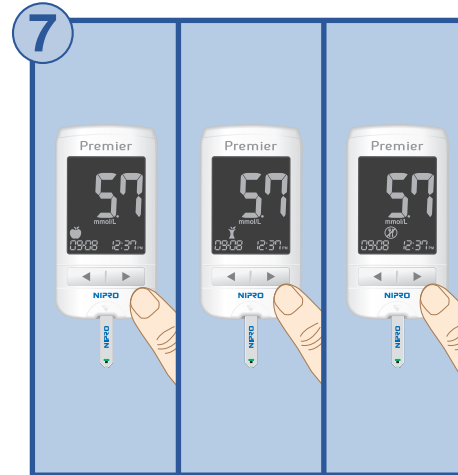
Note: Lancing device is only for self-testing and intended for use by one patient only. Not suitable for use by healthcare or care workers.



With test strip in the meter, touch sample tip of test strip to the top of the blood drop vertically for blood to be drawn. Remove finger from test strip immediately after the meter beeps or the display segments stop rotating.



Result will be displayed with time after 5 seconds.



By clicking the arrow button, select appropriate meal flag (if necessary). Remove test strip while the meal flag is blinking, the test result is stored with the flag.



Hold meter with test strip facing down. Press the strip release button to discard test strip in the appropriate container.

This guide provides a brief overview on testing your blood glucose. If you need information about setting up your Meter with correct date and time, consult the "Preparation" section of the Owner's Booklet. For more detailed information on complete blood glucose testing, consult "Testing" section in the Owner's Booklet.













Exclusive Distributor:

aéras medical

Hotline: 6752 0290

ERROR MESSAGES

Display	Reason	Action
	Used test strip was used	Repeat with new test strip. Make sure sample is touched to edge of test strip (and not top). If error persists, call for assistance.
	Blood or control solution was applied before  appeared	Repeat with new test strip. Wait until the  symbol appear before applying the blood or control solution sample.
	Temperature during the test was above or below the operating range	Move to an area where the temperature is within the operating range (5–45°C) and repeat the test after the meter and test strips have reached a temperature within the operating range.
	Blood sample has abnormally high viscosity or insufficient volume	Repeat with new test strip.

Display	Reason	Action
	Wrong blood glucose test strip is used.	Repeat with new Nipro Premier test strip. Premier meters are only compatible with Nipro Premier test strips.
	Meter Error	Call for assistance.
	Bluetooth communication error	Call for assistance.
	Electronic error	Repeat with new test strip. If error message persists, call for assistance.